

ARMSTRONG - STEAM & ENGINEERING

FROM CONCEPT TO CONCLUSION

PRODUCT DATA SHEET

PRODUCT # SEP-M1

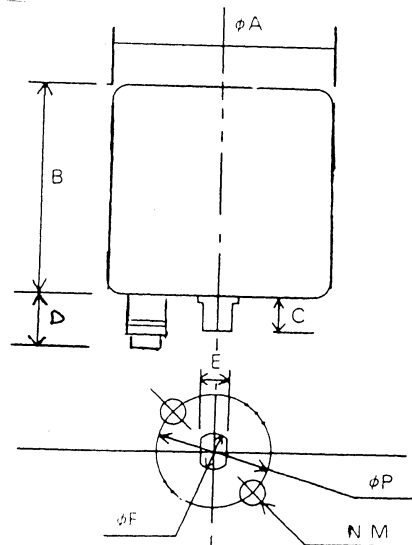
ISSUED 1/98

ELECTORQUE VALVE ACTUATION

ELECTRIC ACTUATOR. COMPACT DESIGN.
SUITABLE FOR SMALL QUARTER TURN VALVES.
WEATHER PROOF RATING IP65 EQUIVALENT.

MAXIMUM TORQUE 20 NM

MODEL	A	B	C	D	E	F	P	N	M
M1	100	103	12	30	10	14	50	2	M5



MODEL #	M1
MOTOR OUTPUT	35 WATTS
ON / OFF TIME 50HZ	6 SECONDS
POWER SUPPLY	240 / 110 / 24 VAC....24 VDC
RATED CURRENT	0.2 AMP
CABLE INLET	1/2" PF X 1
POSITION SWITCH	2 STANDARD
ENVIROMENTAL PROTECTION	IP 65 EQUIVALENT
WEIGHT	1.8 KG
AMBIENT TEMPERATURE	-10 / +50 DEG C.

ALL DIMENSIONS ARE IN MM AND ARE APPROXIMATE ONLY IF CRITICAL PLEASE CONFIRM