

ARMSTRONG - STEAM & ENGINEERING

FROM CONCEPT TO CONCLUSION

PRODUCT DATA SHEET

PRODUCT # SEP-614

ISSUED 1/98

DESCRIPTION

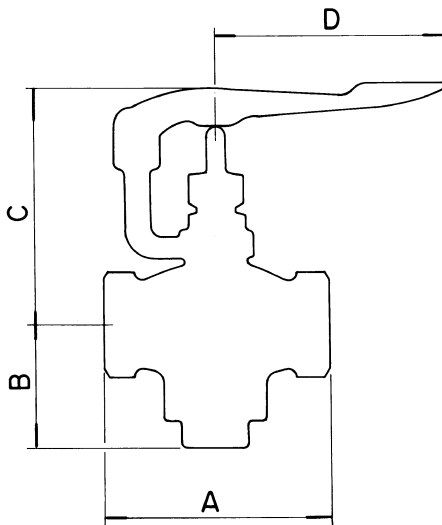
BRONZE QUICK OPENING GLOBE VALVE. SPRINGS CLOSED.
 ALSO REFERRED TO AS A WHISTLE VALVE.
 SOFT SEAT, LEVER / PEDAL OPERATED.
 CAN BE OPERATED BY FOOT OR BY LINKAGE ETC

COLD WORKING PRESSURE : 1035 KPA

SATURATED STEAM PRESSURE : 900 KPA

MAX TEMPERATURE :

185 DEG C.



SIZE	A	B	C	D	CV	KG	PART NAME	MATERIAL
							BODY	BRONZE
15	74	40	85	87		0.8	CAP	BRONZE
20	84	45	90	87		0.9	LEVER	BRONZE
25	95	54	105	121		1.3	STEM	BRASS
							DISC	PTFE
							SPRING	302 S/S

ALL DIMENSIONS ARE IN MM AND ARE APPROXIMATE ONLY IF CRITICAL PLEASE CONFIRM