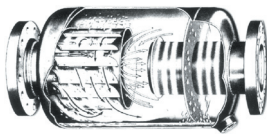


STEAM SPECIALTY PRODUCTS



ASE - 2000

In-line Steam Separator. To protect expensive equipment from the harmful effects of entrained moisture droplets in steam lines. 100% Australian made.

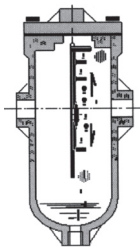
FEATURE: High efficiency design.
OPTIONS: Stainless Steel Bodies
SIZES: 15 - 600 mm Screwed / Flanged
CWP: up to 4000 kPa
STEAM: up to 4000 kPa **MAX TEMP:** 400 Deg C



ASE - 3000

In-line Steam Separator. To protect expensive equipment from the harmful effects of entrained moisture droplets in steam lines. 100% Australian made.

FEATURE: High Efficiency Design
OPTIONS: Stainless Steel Body.
SIZES: 15 - 400 mm Screwed / Flanged
CWP: up to 4000 kPa
STEAM: up to 4000 kPa **MAX TEMP:** 400 Deg C



ASE - S16

Cast Iron baffle type separator. Simple, cost effective construction. These separators can significantly increase the life of regulators by providing dry steam.

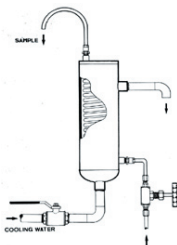
FEATURE: Light weight & compact.
OPTIONS: Steam Traps, drainers to suit.
SIZES: 15 - 25 mm BSPT / NPT
CWP: 1600 kPa
STEAM: 1600 kPa **MAX TEMP:** 210 Deg C



SILENCERS

Fabricated Steam Exhaust Silencers. Usually fitted after pressure relief valves etc to reduce environmental noise pollution. Inline versions are also available.

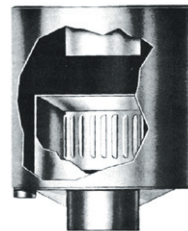
FEATURE: Fabricated to your exact specification.
OPTIONS: Fully certified engineering drawings.
SIZES: To suit specific applications
CWP: To suit
STEAM: 4000 kPa **MAX TEMP:** 250 Deg C



SAMPLE COOLERS

316 Stainless Steel is standard, other materials available on request. Can be supplied complete with valves to suit.

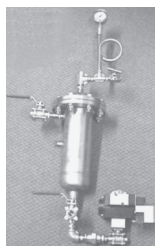
FEATURE: Design can be modified to suit you.
OPTIONS: Various valve options to suit.
SIZES: 8 - 50 mm BSPT / NPT
CWP: 4000 kPa
STEAM: 3200 kPa **MAX TEMP:** 240 Deg C



EXHAUST HEADS

Fabricated exhaust heads for industrial stacks. Prevent solids or liquids being discharged to atmosphere through vent stacks.

FEATURE: Design can be modified to suit you.
OPTIONS: Steel or stainless steel construction
SIZES: 15 - 1200 mm. ANSI 150 / Table E
CWP: Not Applicable
STEAM: 4000 kPa **MAX TEMP:** 250 Deg C



CONDENSATE COOLERS

Fabricated stainless steel sample coolers, for reducing temperature of condensate prior to discharging to drain. Other cooling applications can be addressed with these.

FEATURE: Easily modified to suit you.
OPTIONS: Full range of valves to suit.
SIZES: 8 - 50 mm BSP / NPT
CWP: 4000kPa
STEAM: 2100 kPa **MAX TEMP:** 220 Deg C



TRAINING MATERIALS

Video Tapes, Technical Manuals, P.C. Software or Personalised Training Programs. Armstrong Steam & Engineering can provide training at any level.

We embrace Armstrong International's registered moto of:

"Knowledge Not Shared is Energy Wasted"